

Using the TruPulse Laser Rangefinder with the Ricoh Caplio 500

January 8, 2009

This support note describes how to connect and use the TruPulse Laser Rangefinder with the Ricoh Caplio 500 camera.

Setup:

1. Make sure the Bluetooth on the TruPulse is turned on by pushing and holding the down arrow. When the menu comes up, push the down arrow until you see bt. Push the Fire button, and make sure it says bt_on. If it says Off, push the down arrow to turn it on. Push the Fire button to select bt_on and get out of the menu.
2. The TruPulse has a built-in passkey of 1111. This needs to be entered on the camera in order to connect. On the camera, push the MENU button. Push the right arrow to get to the EXP SET tab. Push the down arrow to get to the PASS KEY. Push the right arrow to enter the 1111 passkey into the camera, and then push OK.

Make the connection:

1. Make sure the TruPulse is still on.
2. On the camera, push the MENU button, and then push the right arrow to get to the EXP SET tab. Push the down arrow to get to BT SERIAL. Push the right arrow to search for Bluetooth devices.
3. The camera should find the TruPulse, and you should see it in the list. Highlight the TruPulse, and push the MENU/OK button. The camera will show Connecting, and then Connected.
4. When you get out of the menu, you should now see the Bluetooth icon in the upper right corner of the screen. The 1 next to the icon means you are connected to one Bluetooth device. If you are also connected to an external receiver, it will show a 2 next to the icon.

Take the measurement:

When you are ready to take a picture of a feature and want to measure the distance (and angle if you have the TruPulse 360) to the object, simply shoot the laser at the object, and you should see the distance (and bearing) appear on the screen of the camera. Take the picture. This distance and bearing will now be associated with that picture. Shoot the laser again, and the distance and bearing will be changed for the next picture.



P. O. Box 31, Jerome, ID 83338

Ph: (208) 324-8006 Fax: (208) 324-8015 www.elecdata.com support@elecdata.com

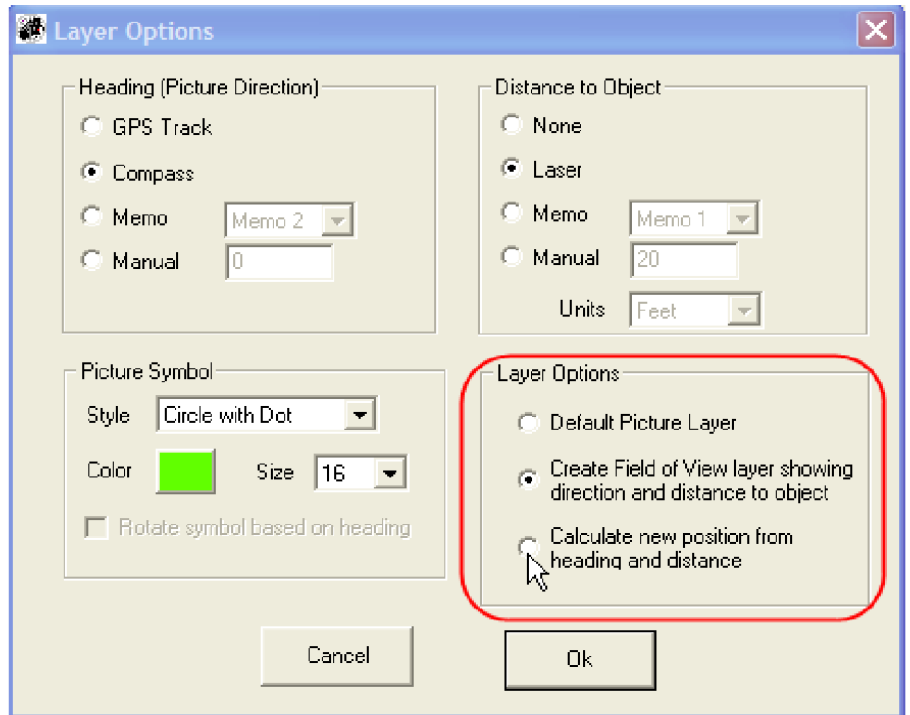
Process the pictures:

When you are back in the office, process the photos with GPS-Photo Link.

In the GPS-Photo Link software, click on Layer Options.

You will be able to use the distance and bearing measurements to offset the GPS position collected by the camera to the true location of each feature.

Or you can use the measurements to create Field of View cones in your final map.



Note: If you are running Wind Image, the current version does not support laser offsets and field of view cones. The data from the laser will be stored in the attribute table of the shapefile or feature class. The next release will support this functionality and should be released soon.