



Geo2003 Memory Management

February 12, 2007

MAPPING & GIS

Summary

The early GeoExplorer CE series from Trimble (GeoXT/XM) include three part numbers (all collectively referred to as 'GeoCE 2003'): CE 3.0 (OS 1.10.02): 46475-xx; CE 4.2 .NET (OS 2.00.02): 49050-xx; CE 4.2 Pocket PC 2003 (OS 3.00.01): 50950-xx. All of these units come with separate RAM (Main Memory) and DISK storage. The same is true of any Windows CE device prior to Windows Mobile 5.0. Since RAM is battery-backed, data or program registry entries stored to RAM can become lost if they are not backed up properly. Also, using RAM for data storage can significantly slow down the unit.

Procedure

Step 1: BACKUP YOUR RAM.

PN 46475-xx: Go to Start/Program/Utilities/Back Up Main Memory

PN 49050-xx: Go to Start/Program/Utilities/Back Up Main Memory

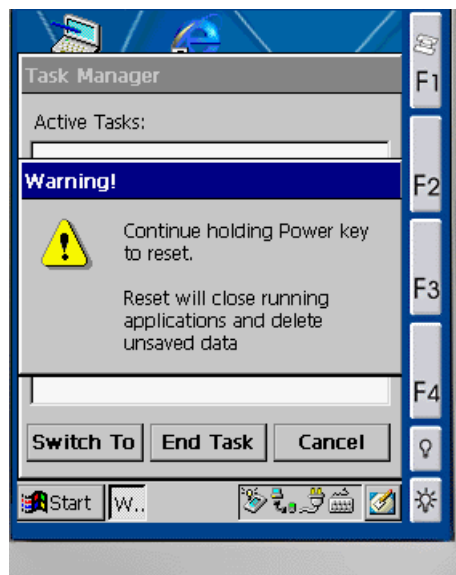
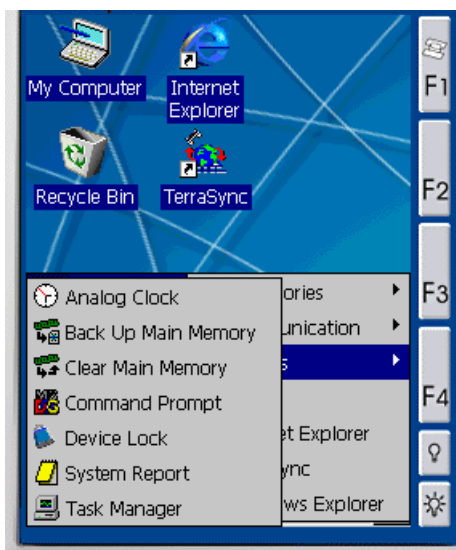
PN 50950-xx: Go to Start/Programs/Pocket Backup...then hit "Backup Button". Say "yes" to overwrite existing backup. Then hit "Start"

Step 2: RESET YOUR DEVICE

As you use a CE device and open and close programs, over time RAM may gradually be used up which can interfere with your running programs. A soft reset will close running programs and clear the contents of Main Memory (RAM). Please note that although quickly pressing the power button appears to turn the unit off, doing so simply puts it into "sleep" mode. To perform a soft reset, press and hold the power button for 8 or more seconds until the screen turns black. Release the power button as soon as you see the "Trimble" and "GeoExplorer CE Startup" screen. Holding the button for 18 or more seconds will result in a hard reset, which powers the unit off and restores Main Memory from the last backup file.

Resetting the unit takes about 2 minutes to complete.

Note: Hard resetting your device without backing up data may result in the loss of data or installed programs. Please ensure that you have followed the backup procedure outlined in Step 1.



Geo2003 Memory Management

February 12, 2007

MAPPING & GIS

Step 3: CHECK/ SET MEMORY USAGE

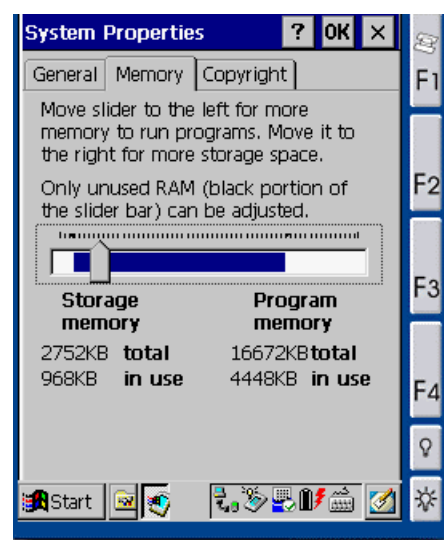
If your unit is running slowly even after performing these two steps, adjust your memory slider bar to the left to accommodate more RAM for programs (such as TerraSync and ArcPad).

PN 46475-xx: Go to Start/Settings/Control Panel/System/Memory

PN 49050-xx: Go to Start/Settings/Control Panel/System/Memory

PN 50950-xx: Go to Start/Settings/System/Memory

Adjust the slider bar further to the left in order to allow more space for your programs to run. This step is more important with the 46475-xx units that have 32MB of RAM. The 49050-xx and 50950-xx units have 64MB of RAM so there is more RAM available for running programs.



Step 4: VERIFY STORAGE LOCATION

Ensure that all your field programs have been stored to DISK and not the RAM (or “Main Memory”). When installing field software, do not select the default install location; instead select “DISK”. You can tell if your field software is installed to RAM if your storage memory “in use” is greater than around 5MB (5000KB). If that is the case, download any field data and remove the program. Start/Settings/Control Panel/Remove Programs in the 46475-xx and 49050-xx units and Start/Settings/System/Remove Programs in the 50950-xx unit. Delete any remaining program folders using File Explorer. Then reinstall your software from your office PC to your handheld, this time installing to “Disk” as opposed to the default location. Perform a RAM backup as in Step 1 and a soft reset as in Step 2. Check the memory allocation as in Step 3 to verify the drop in your storage memory number. Now there will be more available RAM space to use for running programs in the field.


Support Partner

