

Send Photos From the Ricoh Camera to a Windows Mobile Device For Use in ArcPad or TerraSync

February 26, 2009

This document describes how to send photos from the Ricoh camera to a handheld running TerraSync or ArcPad and link the photos to a feature.

Set up the Data Dictionary, Shapefile or Feature Class:

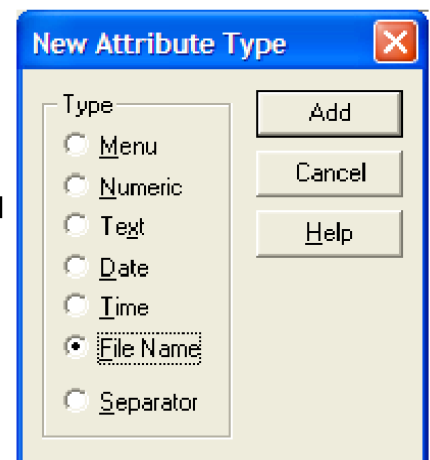
In order to link pictures to a feature mapped in the field, there needs to be an attribute that will contain the picture file name.

If you are using ArcPad by itself or with GPS Analyst and GPSCorrect, you only need to add a text field to the Attribute Table of the shapefile or feature class. This field will contain the file name of the picture.

If you are using TerraSync, you will need to use Pathfinder Office to create a data dictionary that will have an attribute where the file name can be stored.

Open the Data Dictionary Editor, and create a new data dictionary or open an existing .ddf file. Set up the feature with the attributes you will be collecting, and then create another attribute that will be a File Name.

Click Add, and name the attribute Photo or Picture. Send the data dictionary to the handheld for use in TerraSync.



Set up the Windows Mobile Device:

Tap Start>Settings, go to the Connections tab, and tap Bluetooth. Check the box to make the device discoverable. Tap OK.

Set up the camera:

Push MENU, push the right arrow to get to EXP SET, and scroll down to adjust the image file size. Remember that the larger the file size, the longer it will take to send it to the Geo.

Scroll down to CHANGE COM, and make sure it is set to BT. You can change the QUICK SEND MODE to fit your needs. Check the Ricoh manual for a description of the different choices. One-touch would be recommended for most applications.

ELECTRONIC DATA SOLUTIONS®

P. O. Box 31, Jerome, ID 83338

Ph: (208) 324-8006 Fax: (208) 324-8015 www.elecdata.com support@elecdata.com

Send the file:

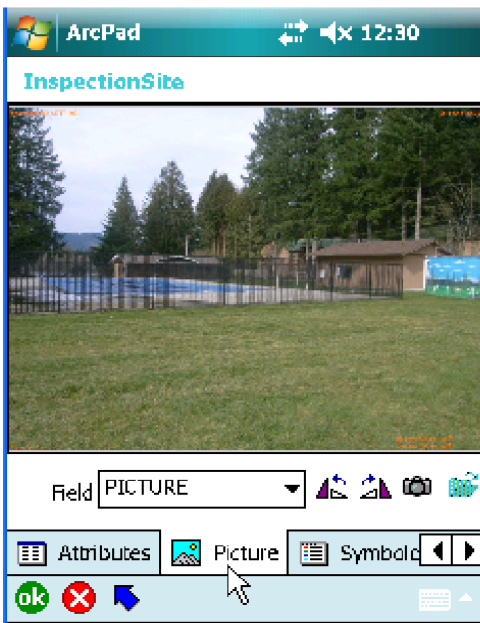
Take a picture. Push the Playback button to display the picture. With the picture displayed, push MENU and scroll down to FILE SEND. Push the right arrow to search for a Bluetooth device. It should pick up the Windows Mobile Device and display it with the serial number. Push OK, choose SEND ONE, and push OK again.

If you get a message on the Geo asking if you want to receive the file, tap Yes.

If you set the QUICK SEND MODE to one-touch, you should now be able to take a picture, and then just push OK to send pictures to the handheld without having to go to the menu and choose File Send every time. **Note: This only works when the camera dial is set to CALS.**

Attach Photo to Feature:

The photo is now be stored in the My Documents folder on the handheld. In your data collection software, you will be able to browse to and select the file name to attach it to a particular feature.



ArcPad:

Create a feature, fill out the attributes and go to the Picture tab.

Set the Field to the attribute you created to store the picture file name.

Tap the open button. 

You should see the file name of the picture you just sent to the handheld.

Tap the file name, and the picture should appear in ArcPad.

Now if you go back to the Attributes tab, you will see that the file name and location has been entered into the picture field and the photo is now linked to that feature.

TerraSync:

Create a feature, and fill out the attributes. When you get to your picture or photo attribute, you should be able to just tap the dropdown arrow and select the picture you just sent over.

If you do not see your picture name in the dropdown, you can tap the button with the three dots to browse to the My Documents folder on your handheld.

If you are using TerraSync 3.3 or later, you will see the picture displayed below the attribute.

Now the picture is attached to the feature and stored with your data file.

