

Setting NMEA Output on Trimble XB Receiver

January 2, 2007

Summary

Trimble XB cards are capable of standard NMEA output. However, the XB receiver may have the SiRF protocol enabled by default. Mapping programs such as ESRI ArcPad will not be able to communicate with the XB until NMEA output is configured.

Installing GPS Controller

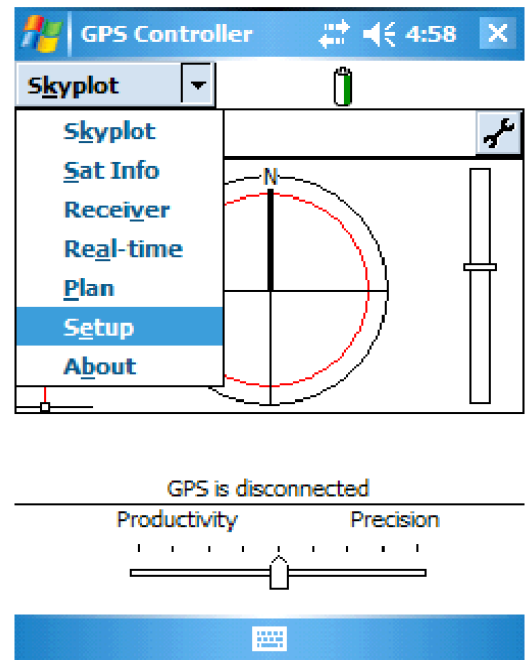
All options are enabled using the *GPS Controller* program, available for download from Trimble's Support Website. To install this program on your mobile device, follow these steps:

1. Download the program from http://www.trimble.com/support_trl.asp?Nav=Collection-32053.
2. Connect your mobile device using Microsoft ActiveSync technology.
3. Run the program downloaded in Step 1. Install to non-volatile storage, such as DISK or Built-in Storage, if given a choice regarding install directory. *Note: Windows Mobile 5.0 will not present you with a choice, as programs are always installed to non-volatile memory.*

Set Configuration Options

All configuration options are set by first connecting to the receiver in GPS Controller, setting options, then disconnecting from the receiver in GPS Controller. Connecting for the first time will require setting up a Bluetooth COM port on your mobile device. For more details, see the documentation for your device or see http://www.trimble.com/pathfinderxb_ts.asp?Nav=Collection-43265 for a Trimble Support Note that applies to your system.

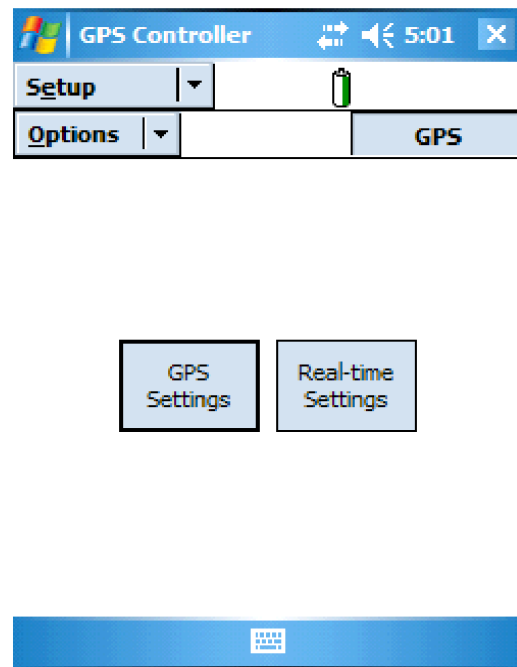
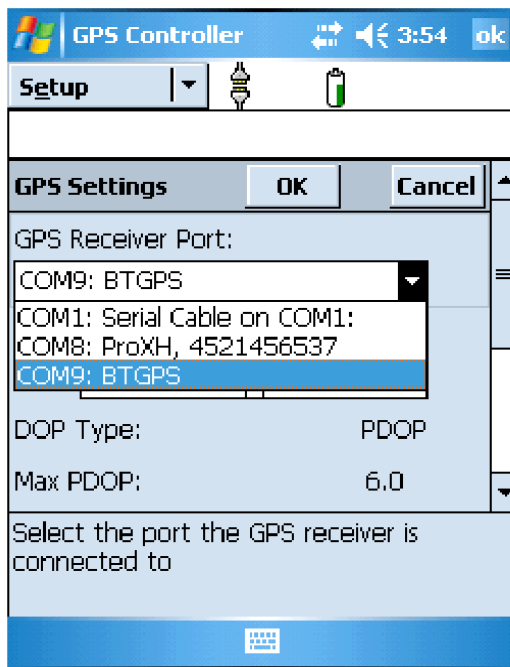
1. Start GPS Controller by going to Start > Programs. The program will attempt to connect to a GPS receiver on the first available COM port.
2. Tap the drop-down arrow in the upper left-hand corner and select Setup.
3. Tap GPS Settings.



ELECTRONIC
DATA SOLUTIONS

P. O. Box 31, Jerome, ID 83338
(208) 324-8006 Fax (208) 324-8015
www.elecdata.com support@elecdata.com

- Set GPS Receiver Port to the appropriate Bluetooth COM port. Tap OK to save this change.
- Tap the **GPS** button in the upper right-hand corner to connect to the XC card.



- Once connection is made, tap GPS Settings.
- Scroll down and change NMEA Output to **On**. Tap the wrench that appears next to NMEA Output to configure which NMEA sentences to have the XB output. Tap OK to save this change. A message appears stating that 'The NMEA output settings will be applied on disconnect.' *Please note that this does NOT occur if you simply exit GPS Controller.*
- Tap Options > Disconnect from GPS to apply the settings changes.
- When prompted, tap Yes to disconnect. NMEA output is now set.

