

Configuring T-Mobile Cellular Internet Access on the Trimble Juno SC

June 15, 2009

The Juno SC includes a cellular modem, which allows Internet connectivity in the field wherever you have cellular service.

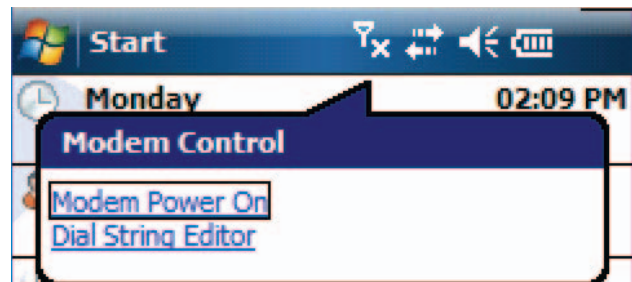
The Juno SC handheld has PTCRB certification. It can be operated license-free on networks which accept these cellular certifications and which do not require explicit certification by the network carrier. Examples are the T-Mobile and Virgin Wireless networks in the USA.

Note: The Juno SC handheld does not have AT&T certification, and therefore cannot be used on the AT&T network in the USA.

The following example illustrates how to enable and configure T-Mobile cellular service on the Juno SC.

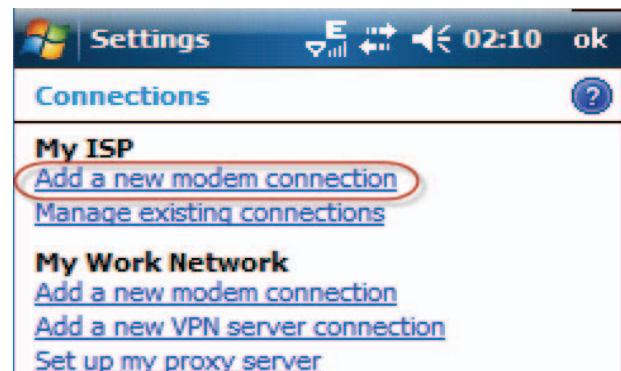
1. Purchase an Internet-only (voice-blocked) service plan. As of this writing, T-Mobile has a "Total Internet" package for \$39.99 per month.
2. Insert the T-Mobile SIM card in the Juno SC. This requires removing the battery card door, and opening the SIM card cover on the right side of the Juno SC (as you are looking at the screen).
3. Replace the battery card door and hold the power button for 5+ seconds to restart the Juno SC (removing the battery card door powers the Juno SC completely off, which requires a reset to turn back on).

4. Turn the Juno SC modem on.



5. After powering the modem on, the status bar will display signal strength after a short time.

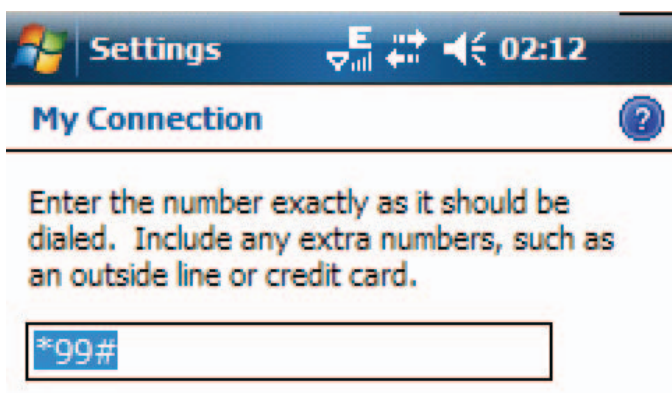
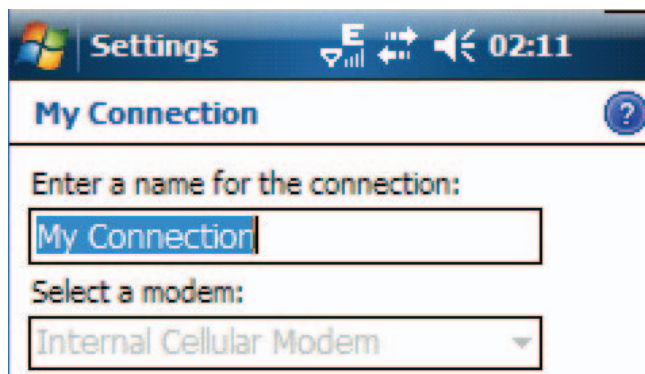
6. Add a new modem connection (Start > Settings > Connections > Connections > Add New Modem Connection)



ELECTRONIC DATA SOLUTIONS®

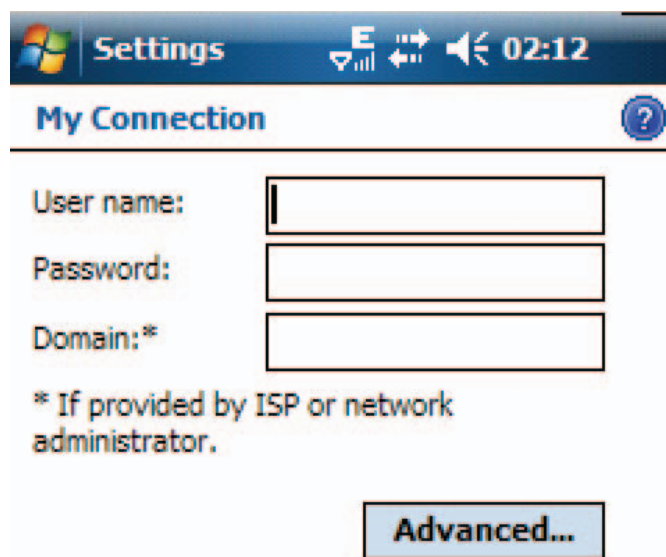
P. O. Box 31, Jerome, ID 83338
Ph: (208) 324-8006 Fax: (208) 324-8015 www.elecdata.com support@elecdata.com

7. Name the connection, and tap **Next**.

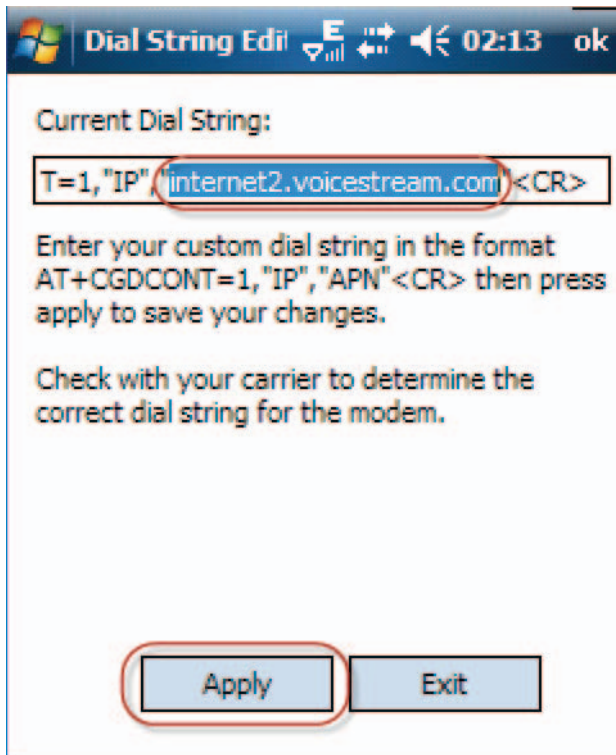
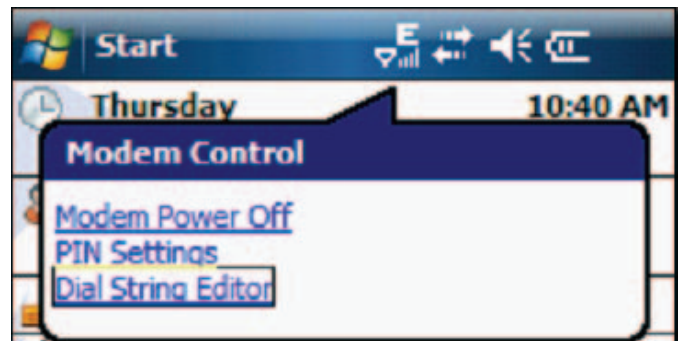


8. Enter ***99#** as the number to dial then press **Next**.

9. Leave the user name, password, and domain empty then press **Finish**.



10. Open the Dial String Editor by tapping on the signal strength icon.



11. Edit the "APN" portion of the dial string to be one of the following then press **Apply**.

internet2.voicestream.com
internet3.voicestream.com
wap.voicestream.com

E.G.: `at+cgdcont=1,"IP","internet2.voicestream.com"<cr>`

Note: if one address doesn't work, try another.

12. Test the connection by opening Internet Explorer on the Juno SC and browsing to a Web page like www.google.com.

Note: Disable WiFi so you are sure that Internet Explorer is using the cellular modem for the Internet connection.