

Installing and Setting Up the License Manager for Use with Pathfinder® Office or GPS Analyst™

November 29, 2011

The Mapping & GIS License Manager software enables you to manage floating licenses for the following Trimble® Mapping & GIS applications:

- Version 1.20 and later of the Trimble GPS Analyst™ extension for Esri ArcGIS software
- Version 4.00 and later of the GPS Pathfinder® Office software

Please note that the License Manager for Pathfinder Office 5.1 and later and GPS Analyst 2.4 and later is not compatible with Pathfinder Office 5.0 and earlier and GPS Analyst 2.3 and earlier. If you are running both new and old versions of software, you will need to run two versions of the License Manager on two different servers.

There are two main parts to set up for the floating license: the License Manager and the License Administrator.

License Manager:

You can use the Mapping and GIS License Manager to:

- View floating license information
- Add new or updated licenses

The Mapping and GIS License Manager is installed on a network computer and communicates with the client machine where the License Administrator software is installed.

License Administrator:

The License Administrator software is installed on the client machine when you install Pathfinder Office or GPS Analyst. The License Administrator displays information about the type of license being used. It also enables you to:

- Change the network computer that the software obtains its floating license from.
- Change from a single use license to a floating license and vice versa.
- Switch from Viewer Mode (Pathfinder Office 5.1 and later) to a Single Use or Floating license and vice versa.

ELECTRONIC DATA SOLUTIONS®

P. O. Box 31, Jerome, ID 83338

Ph: (208) 324-8006 Fax: (208) 324-8015 www.elecdata.com support@elecdata.com

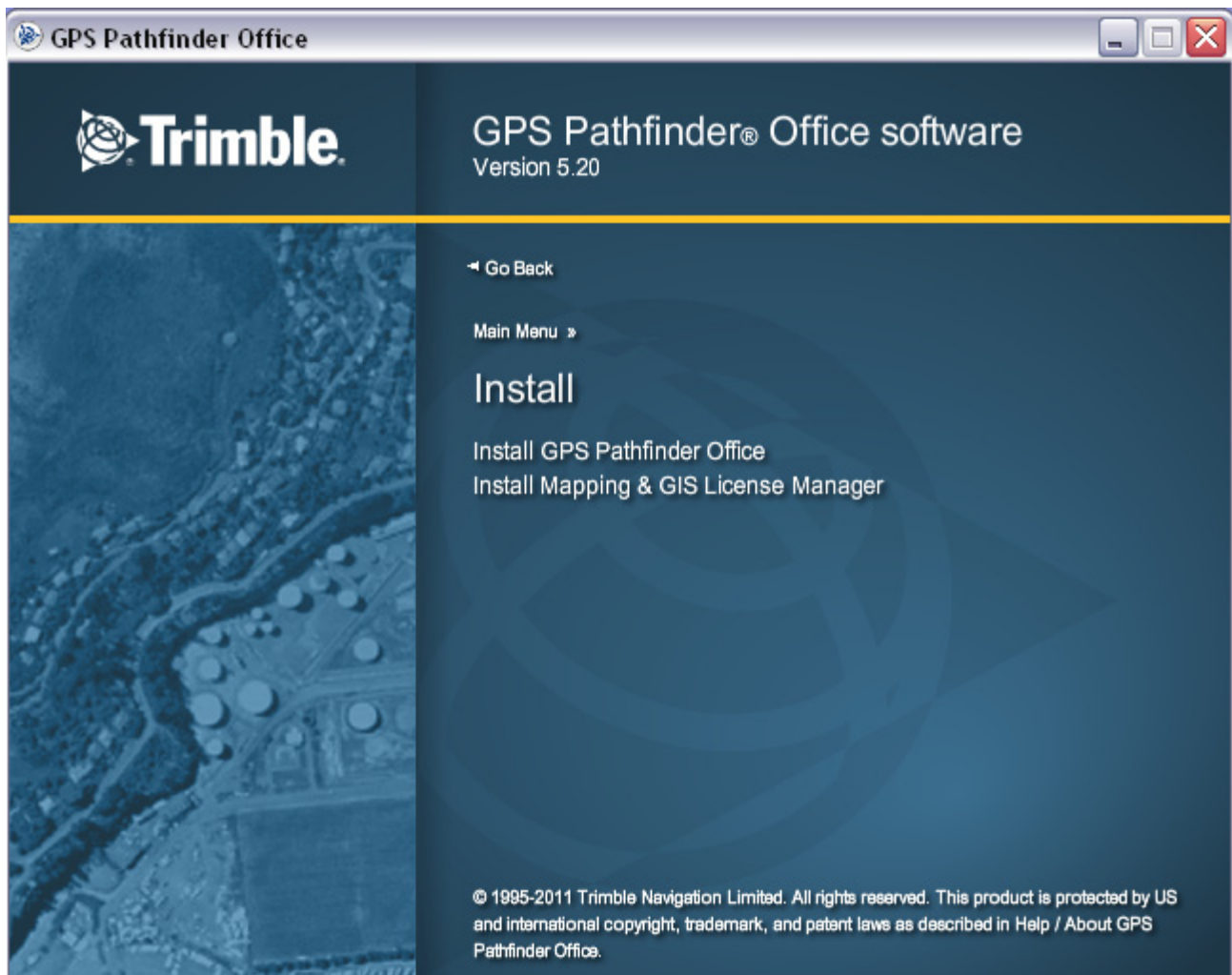
Installing the License Manager:

To install the license manager on a network computer, download the desired GPS Analyst or GPS Pathfinder software from www.trimble.com/support.

The license manager is included in the download for Pathfinder Office 4.0 or later and in the download for GPS Analyst 1.2 or later.

Unzip the downloaded file, and double-click the Autorun.exe file to start the installation.


The installation wizard will open. Click Install on the Main Menu, and then you will see the screen below. Click Install Mapping & GIS License Manager.



Follow the wizard through the installation. You will not need an installation code to install.

When you are finished, you can open the License Manager by going to:

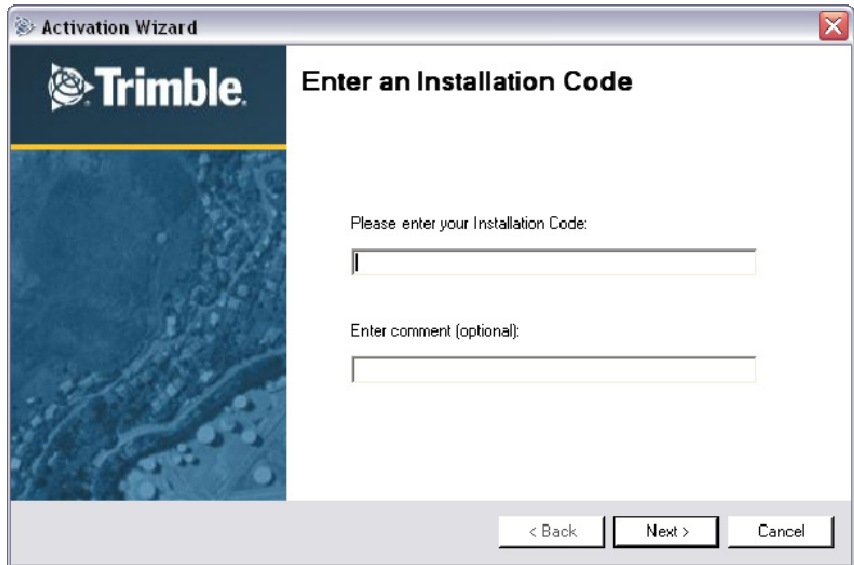
Start > Programs > Trimble > Mapping and GIS License Manager > License Manager.

Add the licenses to the License Manger by clicking 

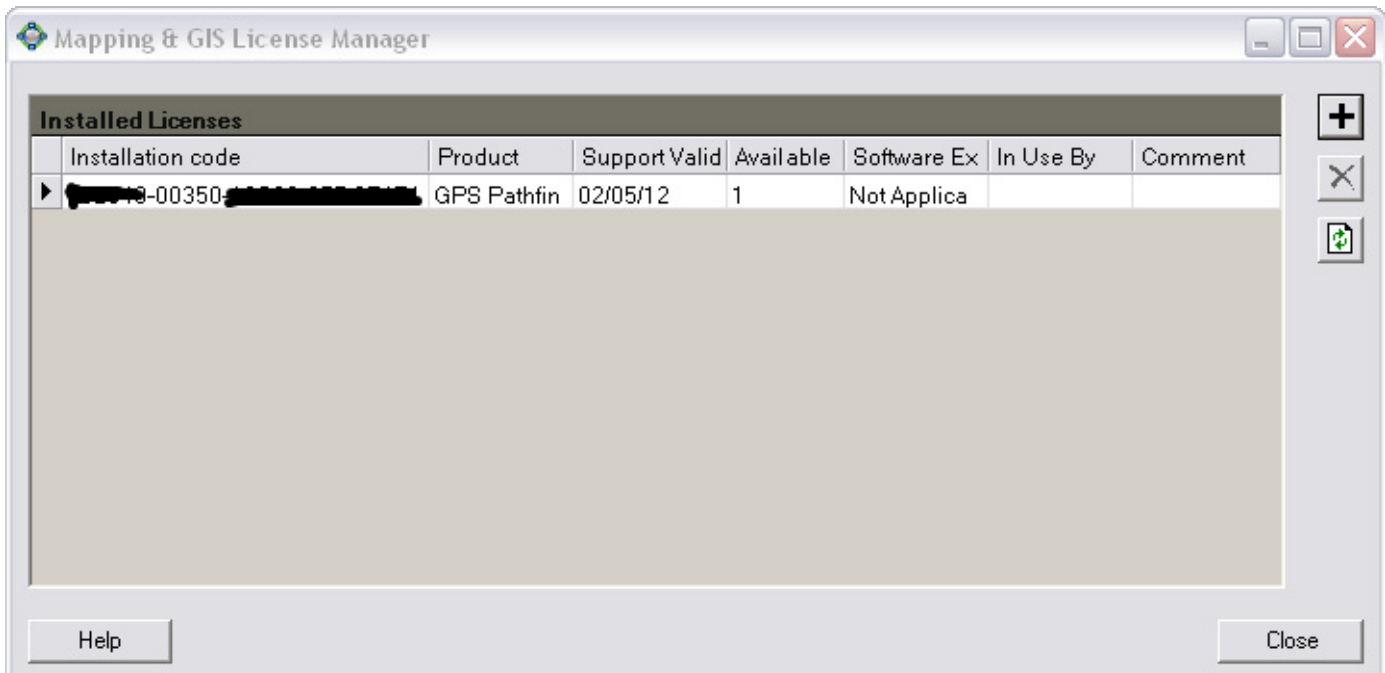
This will bring up the Add License dialog where you will enter the installation code and an optional comment.

Click next and activate the software.

When you have all the installation codes for all your licenses entered, you will see them listed in the License Manager window, which displays information for each floating license.



Click on a column header to sort licenses based on that field. Click on Help for a description of each field. When you are finished, click Apply and then click OK.



Switching from Single Use to a Floating Licence:

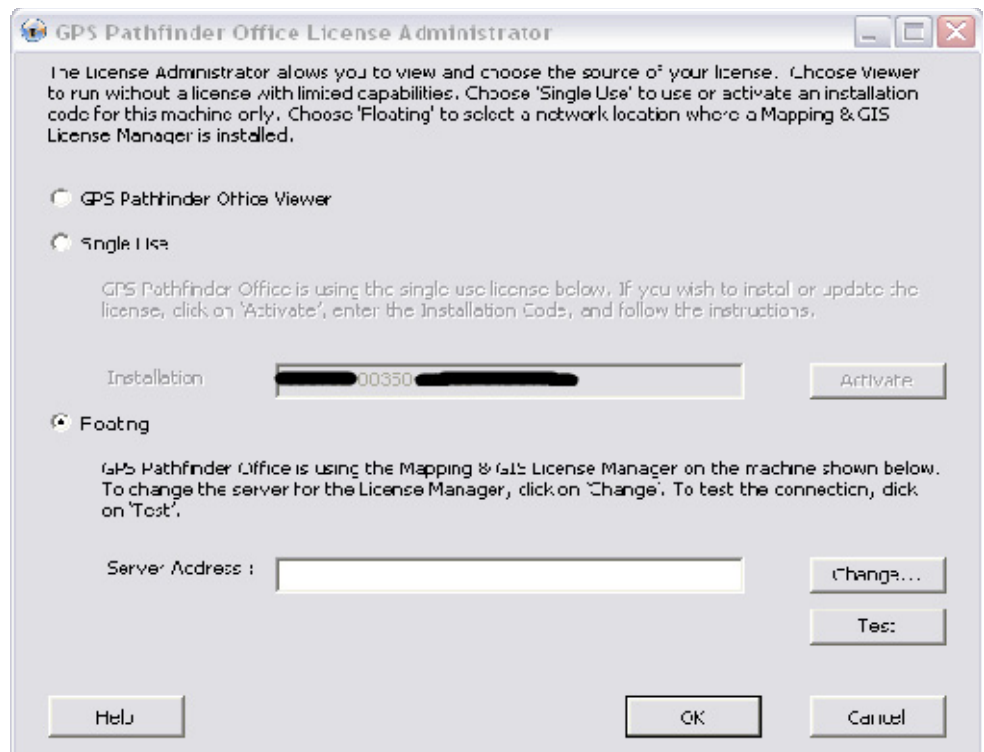
If you already have Pathfinder Office or GPS Analyst installed on the client computer as a single use license, you can change that to a floating license by going to Start>Programs>Trimble.

Go to either GPS Pathfinder Office or GPS Analyst and then to the License Administrator for that software, and the License Administrator will open.

Select Floating, and then click Change to browse to the network computer where the License Manager is installed.

You can click Test to test the connection to the License Manager.

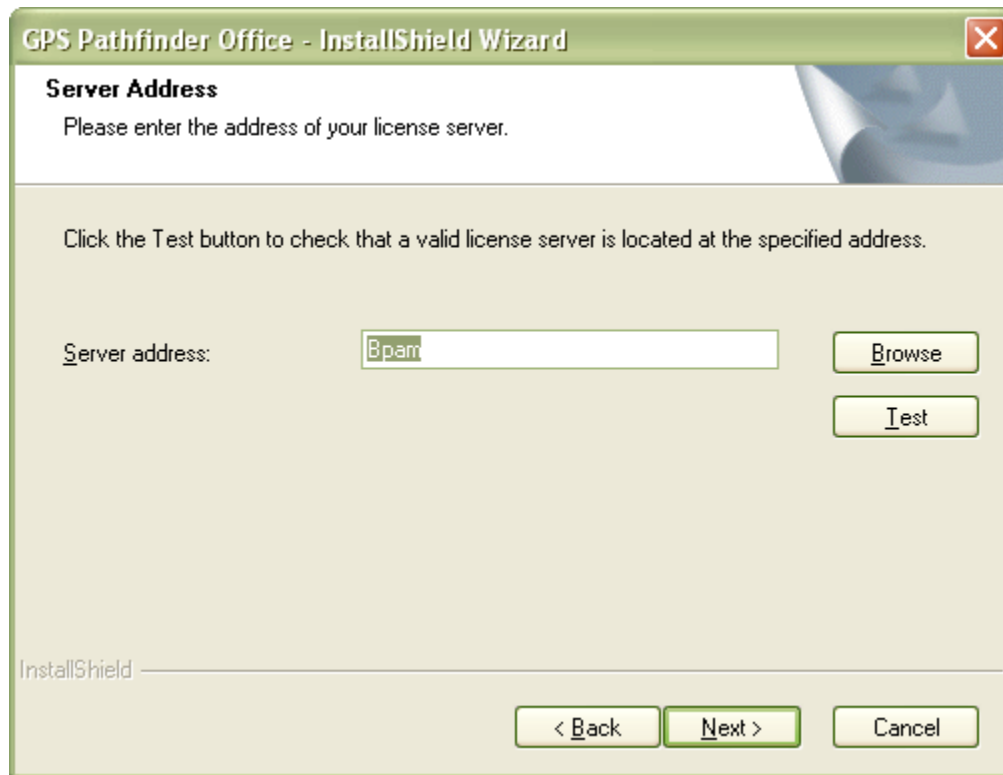
If it is connected and working properly, you should see a message that says “The license server was successfully found and operating properly.”



Installing as a Floating License:

If you do not already have the software installed on the client computer, you will need to download the installer and run the Autorun.exe file from that computer. Again click Install on the Main Menu, but this time choose to install the software instead of the License Manager.

Click the Browse button to browse to the network computer, and click Test to ensure the server is found. If the connection is working, click Next.



Continue through the wizard until the installation is complete, and let it install any required or recommended updates.

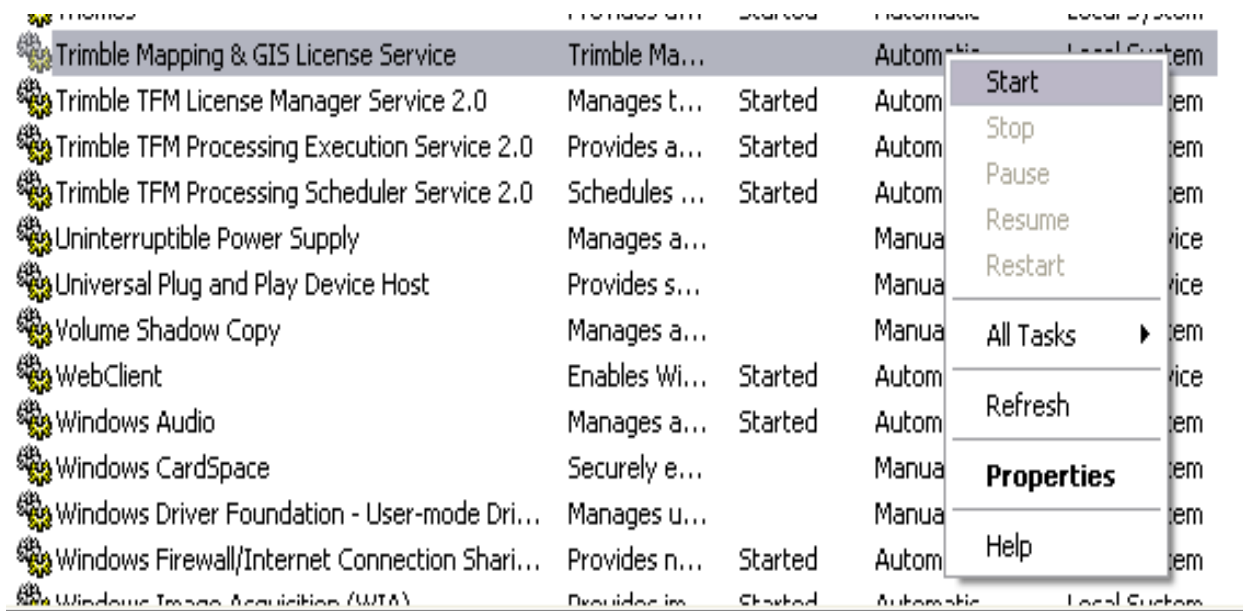
Pathfinder Office or GPS Analyst should now open on the client computer as long as there is a license available.

Troubleshooting:

If you get an error saying a license is not available when you try to open the software or if the test connection fails, there are a few things you can check:

- Be sure your installation code is eligible for the version of GPS Pathfinder Office or GPS Analyst that you are trying to use. If you are upgrading software, your installation code may have changed.
- Make sure that the software is not open on another computer causing the license to be in use. If you only have two licenses, only two computers will be able to open the program at one time.
- Make sure you have installed the License Manager from the same download as the software. If you install an older version of License Manager, the newer software will not connect to it.

- Make sure that your firewall is not blocking the LicenseMonitor.exe. This executable runs in the background on the client computer and can be blocked by the firewall. Try adding it to the exceptions list in your firewall. For Pathfinder Office, you will find it in Program Files\Trimble\GPS Pathfinder Office. For GPS Analyst, you will find it in Program Files\Trimble\GPS Analyst\Bin.
- Make sure the Trimble Mapping and GIS License Service is running on the server. To make sure, open the Control Panel on the network computer. Go to Administrative Tools and then to Services. Scroll down to Trimble Mapping & GIS License Service and make sure that the Status says Started. If it does not indicate that it is started, right-click on it, and click Start.



If you are having trouble setting up a computer to be the server on a network or having trouble getting your client computer mapped to the correct location, please contact your IT department.