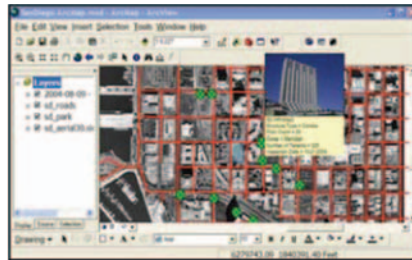


RICOH GPS CAMERA + GIS IMAGING SOFTWARE

- 8.0 mega pixels and 3x optical zoom.
- Ruggedized, waterproof & shock resistant with image stabilization.
- WAAS GPS module (SE-2g).
- WAAS GPS module + digital compass (SE-2c).
- Built in Bluetooth and WiFi.
- Native wide-angle 28 MM lenses (also accepts 37mm screw on lenses).
- The Ricoh camera can store 5 different field memos for each picture taken, which are output as attributes attached to the photo point.



- Barcodes can be read through the lens and scanned into a memo field.
- Connect the camera to a Bluetooth Laser Rangefinder, and the distance and direction to the object can be recorded.
- Record a GPS tracklog with the Ricoh camera.
- Connect to external GPS for greater accuracy.
- GPS Lock feature allows you to store the location of an object then walk back and take the picture.



GPS-Photo Link: GIS Pro Series Software Features:

- Creates: GPS labeled photos, ESRI shapefiles or personal geodatabase feature classes, Google Earth views, Web pages.
- Process your photos with one click using our ArcGIS Plug-in.
- ArcView Extension allows hotlinks! Just click on the featurepoint, and the geo-referenced photo will be displayed! Hover over a point, and a thumbnail of the photo pops up!
- Output field of view layer based on field of view of camera, distance, and heading. Utilize a Wedge or Arrow symbol rotated to direction photo was taken.
- 2d and 3d perspectives available in Google Earth & ArcGIS.



Wind Image for ArcMap Software Features:

- Supports all coordinate systems currently supported by ArcMap.
- Process GPS track-logs into line or point datasets.
- Create ESRI shapefiles and feature classes.
- Supports all ESRI Geodatabase types: Personal, File, and ArcSde.
- Process photos into hyperlinks or embedded raster attributes as part of geodatabase datasets.
- Automatic file naming/moving for hotlinked photos.
- Robust set of photo editing tools.
- Photo thumbnail viewer.
- Imprint date time, GPS position, and attributes on photos.
- Native support in both ArcMap and ArcReader for viewing embedded raster attributes.
- One year of updates included.
- Automatic rotation of symbology based on compass direction.
- Add processed images to map display for easy printing.



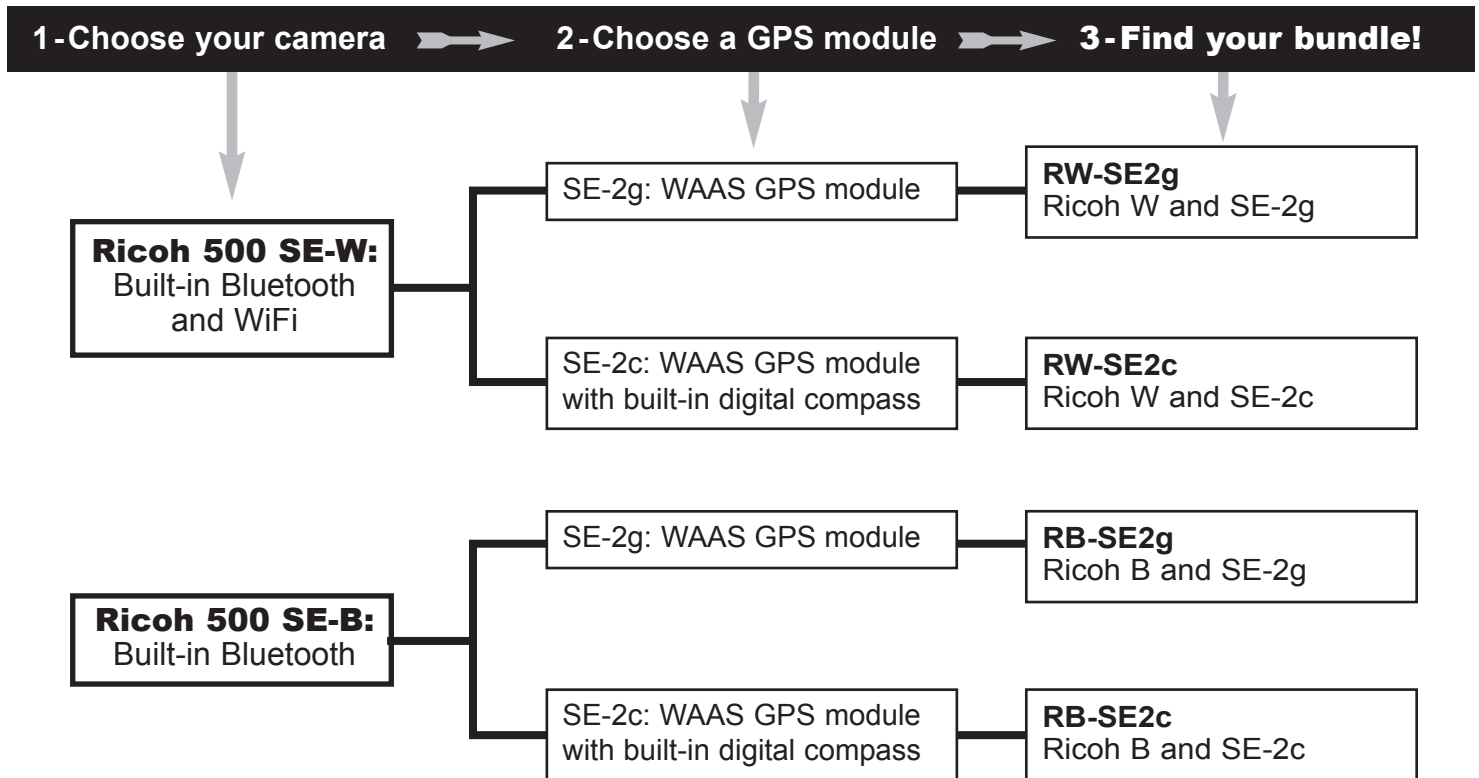
Download demonstration software at: <http://store.elecddata.com/downloads/>

ELECTRONIC DATA SOLUTIONS®

P. O. Box 31 Jerome, ID 83338 Ph: 208-324-8006 Fax: 208-324-8015 www.elecddata.com

RICOH CAMERA BUNDLE PRICING

JUST FOLLOW THE FLOWCHART TO FIND YOUR PERFECT CAMERA BUNDLE!



All Bundles Include Ricoh 500SE:

- 8.0 mega pixels
- 3x optical zoom
- Ruggedized, waterproof and shock resistant with image stabilization
- Native wide-angle 28mm lens (also accepts 37mm screw on lenses)
- Stores 10 different memos or field notes for each picture taken
- Barcodes can be scanned into memos
- Connect the camera to a Bluetooth Laser Rangefinder and the distance to the object can be recorded
- Link AVI movies taken with the Ricoh camera
- GPS Lock feature allows you to store the location of an object then walk back and take the picture
- 1-year warranty

Bundles also include:

- Battery and Charger
- 2 GB SD card
- Hard Pelican case

Additional Accessories Available:

- External GPS Antenna
- 1-year extended camera warranty
- Additional battery

Add photo processing software to any bundle.

- Wind Image for ArcMap
- Wind Image StandAlone
- Wind Image Bundle (includes ArcMap and StandAlone versions)
- GPS Photo Link - GIS Pro Edition
- Ricoh Data Manager

For a comparison of Wind Image and GPS-Photo Link software, see our comparison document, which you can find here:

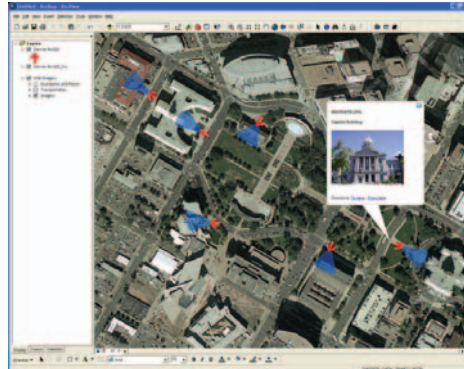
<http://www.elecdata.com/gps/phlnkrich.html>

The TruPulse Laser rangefinders with Bluetooth can easily be integrated with the camera to provide offset information to features or "Field-of-View" information in the final map.

Purchase a laser rangefinder with a camera and software, and receive 10% off the price of the laser.

Call for a quote and additional information on this offer.

SPECIFICATIONS



Hyperlinked geo-image points in ArcGIS using GPS-Photo Link by GeoSpatial Experts

Ricoh Camera Technical

Physical Size:	133.0 x 78.5 x 74mm (W x D x H)
Weight:	Approx. 430g (Excluding battery and SD card)
Power:	Lithium-Ion rechargeable or standard AA
Resolution:	8.13 MP CCD.
Zoom:	3X Optical (25-105mm) 12X Digital
Recording Modes:	Still, sounds, movies w/sound, stills w/sound
Storage Media:	SD Memory Card, Built-in 26MB
LCD Monitor:	2.5" translucent amorphous silicon TFT LCD
Bluetooth and Wireless LAN Specifications:	Bluetooth Communication scheme: Bluetooth a standard version 2.0 +EDR, Output: Bluetooth standard power class 2; Supported Bluetooth profiles: BIP, OPP, SPP Wireless LAN: Interface standard: IEEE802.11 b/g Security: WEP (64/128 bit), WPA-PSK (TKIP/AES), WPA2-PSK (TKIP/AES)
Warranty:	12 Month Limited. Extensions available by Mfg.

SE-2 Modules

GPS Chipset:	SiRF Star II WAAS/EGNOS/MSAS
Channels:	40 channel all in view tracking
Position Accuracy:	1-5 meters, 2D RMS, WAAS enabled
Acquisition Time:	Hot Start: 1 second Warm Start: 38 seconds Cold Start: 42 seconds
Antenna Internal:	Active Geohelix Antenna
External:	Optional patch antenna via MMCX port
Durability:	Drop resistant and Waterproof
Approvals:	FCC - CE - VCCI
Warranty:	12 month Limited
Compass (SE-2c only):	Heading: +/-3° on average Tilt Range: +/-80° from horizontal Accuracy: +/-3°

ELECTRONIC DATA SOLUTIONS®

P. O. Box 31 Jerome, ID 83338 Ph: 208-324-8006 Fax: 208-324-8015

www.elecdata.com