

Hydrolab® Multiprobes

Referring to a Hydrolab Multiprobe will include any of the following:

"Series 3" equipment:

- **H20®**, **H20®G**
- **DataSonde® 3**
- **Reporter™**
- **Recorder™**
- **NH4 Recorder**

"Series 4" equipment:

- **DataSonde 4/4a**
- **MiniSonde 4/4a**

This Tech Note will assist you in setting up your application to accept RS232 input from a Series 3 or Series 4/4a Hydrolab Multiprobe.

NOTE: Series 4 probes must be put into "TTY mode" to work with DataPlus Professional. Please consult the Hydrolab manual for instructions on how to do this.

You will need to previously define your data columns.

Please refer to the following chapters of the Application Generator Manual.

Chapter 8. Hierarchy and Column Control.

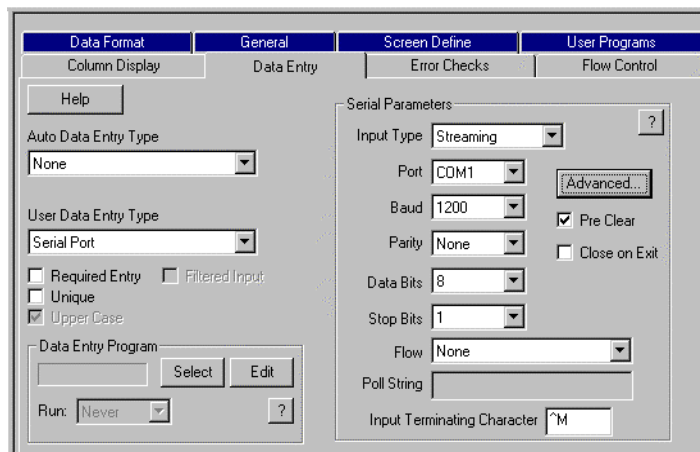
® Hydrolab, H20, MiniSonde, and DataSonde are registered trademarks of Hydrolab Corporation.

™ Reporter and Recorder are recognized trademarks of Hydrolab Corporation.

Chapter 14. Data Entry Tab.

For this example, we will use Temp, pH, DO, and Depth columns for the Multiprobe data.

1. Select a file in the Hierarchy on the left side of the screen by clicking on it. That level should now be highlighted.
2. Select the first column that will use Hydrolab Multiprobe data by clicking on it.
3. Click on the **Data Entry** tab on the right side of the screen to bring it forward.
4. Click on the down arrow under **User Data Entry Type** and choose **Serial Port**. The **Serial Parameters** box will appear. The following parameters need to be set:



Input Type: Streaming

If a serial device sends its data continually and repeats the stream of data without a request from the hand-held

computer when the transfer is initiated, the **Serial Input** type is called **Streaming**.

Port: Com 1

This is the Com port that the RS-232C Hydrolab Multiprobe will plug into on the hand-held. Select the port used on the hand-held.

Baud: 1200 (for Series 3 equipment) or 19200 (for Series 4 equipment), Parity: None, Data Bits: 8, Stop Bits: 1, Flow: None

Verify that the baud rate matches the baud rate for your Hydrolab Multiprobe. The baud rate can be configured to different rates on the Hydrolab Multiprobe.

Pre-Clear: Checked

This option will clear the hand-held's serial input buffer when entering the column that is set up to accept your Hydrolab Multiprobe entry.

Close On Exit: Checked

This option closes the Com port when moving to the next column. This can save power consumption.

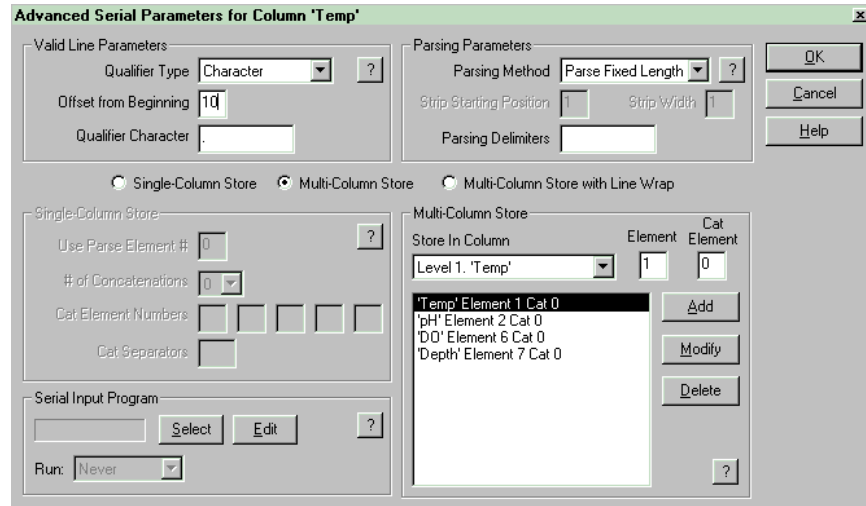
6. Now Click on the **Advanced** button.

The following are example data sentences from the Hydrolab Multiprobe:

```
Hydrolab DataSonde 3 V1.70
(C)opyright 1995 Hydrolab Corporation
SN24479

Time    Temp    pH SpCond    TDS    DO    DO    Depth    Turb    Batt
HHMMSS deg C  units  mS/cm  Kmg/l  % Sat  mg/l  meters  NTU  volts

Date (MMDDYY) : 081296
124412  22.43   7.15   .0225   .0144   97.7   7.67   1.8   89.7   13.8
124413  22.43   7.15   .0225   .0144   96.6   7.57   1.8   89.7   13.8
124418  22.43   7.14   .0225   .0144   94.3   7.37   1.8   89.7   13.7
```



- In the **Valid Line Parameters** group, select **Character** for a **Qualifier Type** and 10 for an **Offset From Beginning** with a **Qualifier Character** of ".". Note that all sentences that have valid data have a decimal point at an offset of 10 from the beginning. This will insure that only the data sentences are used.

8. In the **Parsing Parameters** group, select **Parse Fixed Length** with a space (“ ”) for the **Parsing Delimiters**. Note that all data sentences are the same length with two or more spaces used as delimiters between each data element. If other characters such as a “@ \$&” etc. need to be removed, include them in the Parsing Delimiters also.
9. Select the **Multi Column Store** radio button because we want to store the pH, DO, and Depth when we store the Temp data.
10. In the Multi column store group, select the Temp column in the **Store In Column** drop down. The Temp Data is **Parse Element Number 1**. Press the **Add** button when finished. Note that the element numbers start at 0, not at 1.
11. Repeat the last step for the pH, DO, and Depth columns and data elements.
12. Click **OK** for **Advanced Serial Parameters**.
13. Click on **Compile/Save**.
14. Click on **Test**.