

## Laser Technology Impulse 200

Sometimes you would like to place measurement data in your columns using a laser system. This Tech Note will assist you in setting up columns in your application to accept laser data entry.

DataPlus should work with any laser unit capable of NMEA output. DataPlus was tested using the Impulse 200 from Laser Technology, Inc.

In this example the data was sent to the hand-held after pressing the **Fire** button on the Impulse laser. Check in the laser manual for additional ideas on the different ways data can be received.

You will need to previously define your data columns.

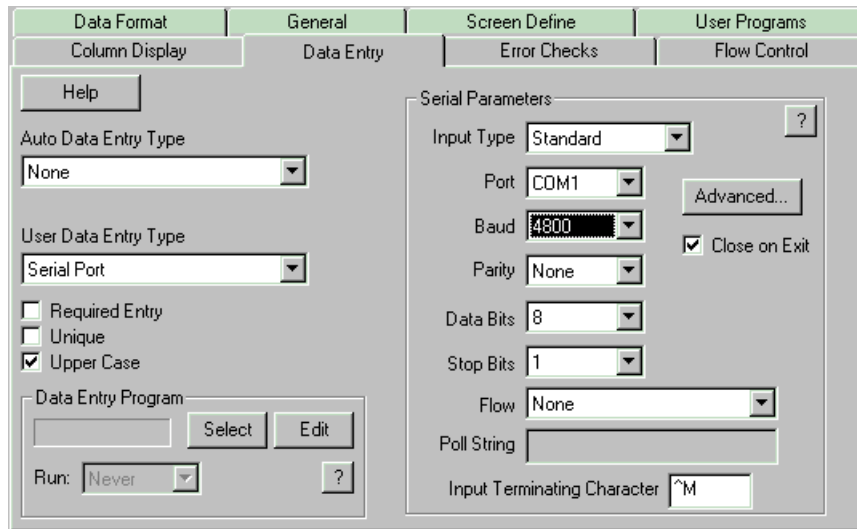
Please refer to the following chapters of the Application Generator Manual.

**Chapter 8. Hierarchy and Column Control.**

**Chapter 14. Data Entry Tab.**

1. Select a file in the Hierarchy on the left side of the screen by clicking on it. That level should now be highlighted.
2. Select the column that will use Laser input by clicking on it. That column should now be highlighted.
3. Click on the **Data Entry** tab on the right side of the screen to bring it forward.

4. Click on the down arrow under **User Data Entry Type** and choose **Serial Port**. The **Serial Parameters** box will appear.



**Input Type: Standard**

If a serial device sends its data without a request from the hand-held computer when the transfer is initiated, the **Serial Input** type is called **Standard**. In this example the Impulse laser will send its data when the **Fire** button on the laser is pressed.

**Port: Com 1**

This is the com port that the laser unit will use on the hand-held. For example, if your hand-held will use com port 2, click on this option and change it to com 2.

**Baud: 4800, Parity: None, Data Bits: 8, Stop Bits: 1, Flow: None**

The laser unit and DataPlus must be set to the same identical settings. If you are having trouble receiving data, verify that your laser uses these parameters.

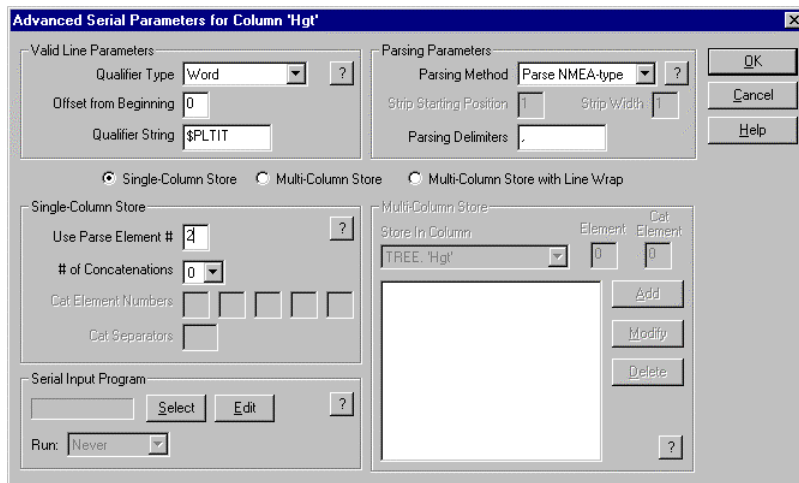
**Close On Exit: Checked**

This option closes the com port when moving to the next column.

5. Now click on the **Advanced** button.

In Advanced Setups we set up parameters that will parse the height from the data sentences received from the laser. The following is a sample data sentence for height from an Impulse 200, with the output format set for CR400:

```
$PLTIT,HT,63.4,F*3C<CR><LF>
```



6. Set the **Qualifier Type** to **Word**. The **Qualifier String** is \$PLTIT.

7. Use an **Offset from Beginning** of 0.

8. Set the **Parsing Method** to **Parse NMEA-type**.
9. Use a comma for a **Parsing Delimiter**.
10. The height is **Parse Element Number 2**.
11. Set the **Number of Concatenations** to 0.
12. These settings yield "63.4" from the example laser data above.
13. When completed, press the OK button.
14. Click on Compile/Save.
15. Click on Test.